

SCOUT™ WD-1

Super Wide Dynamic Box Camera

The Scout Series - WD-1, Wide Dynamic Box Camera, is a Hi Resolution Day/Night camera incorporating the innovative DPS® (Digital Pixel System), technology which not only records the light, but also calculates the changing rate, so it provides a wider dynamic range for each pixel than CCD and CMOS, even when there is a large contrast between lightness and darkness.

The processor translates the light into a digital value at the immediate point of capture, thus minimising signal degradation and

allowing for greater noise reduction methods and an optimal image reproduction.

The Scout WD-1 uses a 1/3" sensor with a resolution of 520TVL (H) and a minimum illumination of 1.0 Lux at f1.2 ; 0.08 Lux at f1.2 (slow shutter), outputting hi resolution crisp images. The dynamic range of the WD-1 is impressive at 95dB Typical to 120dB maximum, making the WD-1 a versatile and impressive camera system.



* Does not come with lens

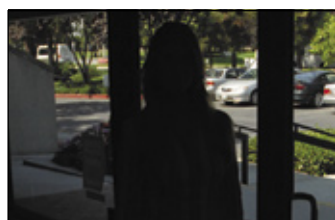
Features

- Excellent image quality
- Patent DPS® - Digital Pixel System Technology
- Super Wide Dynamic Range
- Strong Software Function
- Digital Zoom Function
- Remote Control Function
- OSD menu
- AC/DC Voltage Acceptable
- Double IR-Cut Filter
- Motion Detection
- Alarm Input /Output
- Modern Attractive Design

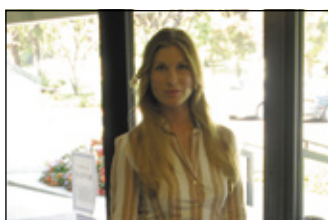
DPS Technology

The wide dynamic sensor and DPS chipset , has been developed so that the lightness of each pixel can be adjusted, the camera can capture sharp and crisp images, not only in the foreground but also in the background. Thus while there is a large contrast between lightness and darkness, the WD produces clear images similar to that of human vision.

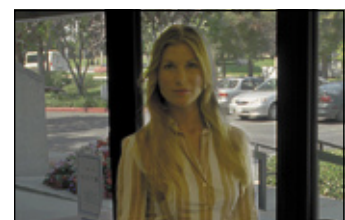
Difference Between Hi Resolution Day/Night and BLUE's WD-1



Hi Resolution Day/Night Camera



Backlit Compensation



Scout WD-1

Specifications

Image Sensor	1/3" DPS (Digital Pixel System)
Effective Pixels	PAL: 720(H) x 540(V) ; NTSC: 720(H) x 540(V)
Signal System	PAL or NTSC Colour System
Resolution	520TVL (Horizontal) 400TVL (Vertical)
Minimum Illumination	1.0 Lux/f1.2 ; 0.08 Lux/f1.2 (Slow Shutter)
S/N Ratio	More than 48dB
Dynamic Range	95dB Typical , 120dB maximum
Control Method	OSD Function Control
White Balance	AWB/ATW/ATW LIMIT/ATW DESAT/MANUAL Selectable
Auto White Balance Range	2000K to 11,000K
AGC	adjustable
Day/Night Function	Yes , with removable IR-CUT Filter
Video Output	1.0 - 1.2vp-p, 75Ohm, Digital Signal output ITU-656 (option)
Motion Detection	Yes
Digital PTZ	Yes
Alarm Input/Output	Yes
Remote Control	Yes, RS232/485 Optional
Gamma Correction	Adjustable
Sync Mode	INTL/LL
Lens Mount	CS/C with ring
Auto Iris	DC/VIDEO
Power Supply	24V/AC, 12V/DC
Power Consumption	4.5W (maximum)
Operating Temperature	-10°~ +50° RH95%MAX
Dimension	62 (W) x 60 (H) x 121 (D) mm
Camera Mount	Two 1/4" 10 UNC (bottom and top)
Weight	500g
Certifications	CE, FC, C-Tick

